



SensoNODE™ Gold & Voice of the Machine™ Cloud

STARTER KIT

Getting Started

Start recording your measurements now!

The SensoNODE Gold and Voice of the Machine Cloud Starter Kit provides an out-of-the-box solution to begin measuring and recording crucial data immediately.

Only three steps are required:

1. Install the sensors 2. Supply power to the collection server 3. Login to Voice of the Machine Cloud.

Set alerts to notify responsible parties of an event, view actionable data in graphical form, and export data for further analysis.

The **SensoNODE Gold** and **Voice of the Machine Cloud Starter Kit** includes:



(1) 150 psi Pressure Sensor and (1) 5,800 psi Pressure Sensor

SensoNODE Gold Pressure Sensors are designed for accurate monitoring with the most commonly used pressures in the industry.



(1) SensoNODE Gold Temperature Sensor

SensoNODE Gold Temperature Sensors are designed for accurate tracking of in-line or ambient temperatures measured in Fahrenheit or Celsius.



(1) SensoNODE Gold Vibration Sensor

Parker's SensoNODE Vibration Sensors provide a simple and effective way to measure vibration of industrial machinery.



(1) SensoNODE Gold 4-20mA Transmitter

The 4-20mA Transmitter turns any wired 4-20mA sensor into a wireless device, making it easier to monitor any asset.



(1) SensoNODE Gold Repeater

The Repeater is used as a network range extender for all sensors connected to mCard PRN, and supports up to 500 sensors.



(1) SensoNODE Gold Gateway System

The gateway is the control center of the system which receives the data from the sensors and transmits it to Voice of the Machine Cloud.



(2) Adapters and (1) Cable

Pipe adapters to convert SAE o-ring port to NPT; M12 connection cable (6.5ft) for use with existing sensor and 4-20mA transmitter.

Installation

Sensors

Battery Installation

Tool needed: Torx T15 screwdriver

1. Correctly orient and insert battery
2. Correctly orient and place battery cover
3. Secure two T15 screws

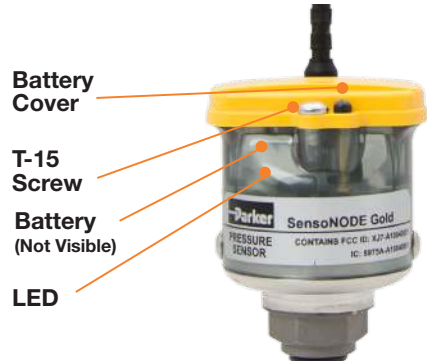
LED Behavior

1. Upon battery insertion:
red, green, blue sequence
2. Thereafter: blink every 20 seconds

Black Button (on battery cap)

- **DO NOT PUSH.** Only press button as directed by a Parker associate

Sensors



Gateway

Antenna Installation

Please see image to the right for correct antenna locations

Gateway



Electrical Power Installation



Voice of the Machine Cloud

Logging into your Voice of the Machine Cloud Account

1. Review confirmation email, received when your order was processed
2. Click the link, in the confirmation email, to setup your password and complete activation
3. In the future, go to parker-scout.com to login

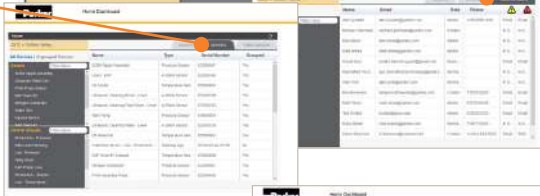
Navigating the Home Dashboard (for administrative setup)

Home Button



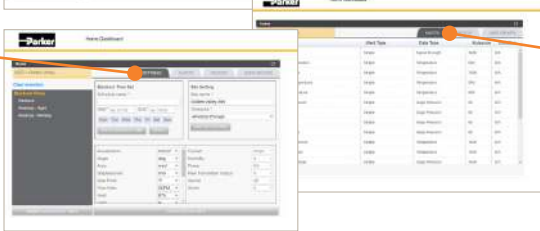
Devices Tab

Add, Edit and Delete Devices, Assets, and Asset Groups.



Settings Tab

Add, Edit and Delete Alerts.



User Groups Tab

Add, Edit and Delete individual Users and User Groups.

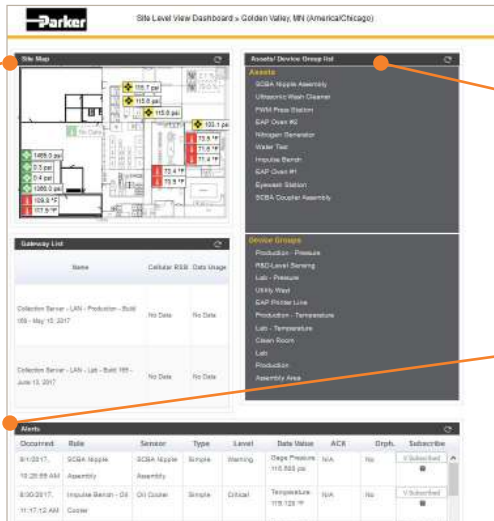
Alerts Tab

Add, Edit and Delete Alerts.

Navigating to Site Level Dashboard

Site Map

View live Measurements and Alarm Conditions.



Asset / Device Group List

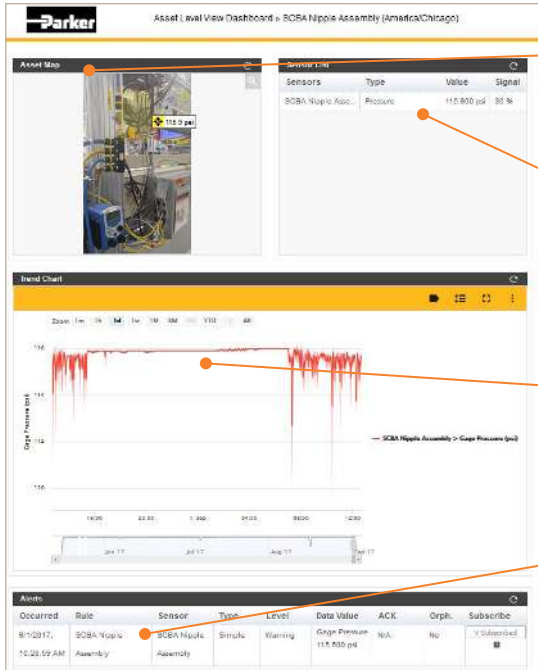
View full Asset List and select individual Assets.

Alerts

Subscribe / View triggered Alerts.

Voice of the Machine Cloud

Navigating to Asset / Group Level Dashboard



Asset Map

View live measurements and alarm conditions.

Sensor List

View full list and select individual sensors.

Trend Chart

View and interact with data.

Alerts

Subscribe / view triggered alerts.

Navigating to Sensor Level Dashboard



Sensor Location

View sensor location.

Data List

View and select measurements available to graph.

Trend Chart

View and interact with data.

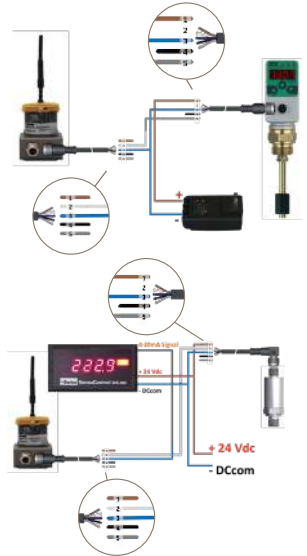
Alerts

Subscribe / view triggered alerts.

Setup an Analog Connector

The Analog Connector will display in Voice of the Machine Cloud as Offline. This is because the transmitter does not have a sensor connected. Once a sensor is connected, the data will display within Voice of the Machine Cloud.

1. Login to Voice of the Machine Cloud
2. Click on **DEVICES** tab
3. Click delete **X** next to Analog Connector
4. Click **OK** on pop-up
5. Click **+ New Device**
6. Input a **Device Name**
7. Select **Analog Connector** from **Device Type** drop-down
8. Input **Serial Number** from rear sticker of Analog connector, begins with ED (see Figure 3)
9. Select desired Data Type from **Mapping** drop-down
10. Input mapped numerical value for **4mA**
11. Input mapped numerical value for **20mA**
12. Click **SUBMIT**



For more information on **SensoNODE** and **Voice of the Machine** products:

Visit: www.parker.com/conditionmonitoring

Call: (763) 544-7781

Email: qcddot@parker.com

Have **questions** or need **help?**

Sign into our Condition Monitoring Service Desk at <https://phscout.atlassian.net/servicedesk/customer/portals>

Unites States

This device complies with part 15 of the FCC Rules. Operation is subject to the following conditions: (1) This device may not cause harmful interference, and (2) this device must accept any interference received, including interference that may cause undesired operation.

Changes or modifications not expressly approved by the party responsible for compliance could void the user's authority to operate the equipment.

This equipment has been tested and found to comply with the limits for a Class B digital device, pursuant to part 15 of the FCC Rules. These limits are designed to provide reasonable protection against harmful interference in a residential installation. This equipment generates, uses, and can radiate radio frequency energy and, if not installed and used in accordance with the instructions, may cause harmful interference to radio communications. However, there is no guarantee that interference will not occur in a particular installation. If this equipment does cause harmful interference to radio or television reception, which can be determined by turning the equipment off and on, the user is encouraged to try to correct the interference by one or more of the following measures:

- Reorient or relocate the receiving antenna.
- Increase the separation between the equipment and receiver.
- Connect the equipment into an outlet on a circuit different from that to which the receiver is connected.
- Consult the dealer or an experienced radio/TV technician for help.

Canada

This device complies with Industry Canada license-exempt RSS standard(s). Operation is subject to the following conditions: (1) this device may not cause interference, and (2) this device must accept any interference, including interference that may cause undesired operation of the device.

Cet appareil est conforme aux normes RSS exemptes de licence d'Industrie Canada. Son fonctionnement est soumis aux conditions suivantes: (1) cet appareil ne doit pas causer d'interférences, et (2) cet appareil doit accepter toute interférence, y compris les interférences pouvant provoquer un fonctionnement indésirable de l'appareil.

Notice: This radio transmitter (IC: 8975A-A10040601) has been approved by Industry Canada to operate with the antenna types listed below with the maximum permissible gain and required antenna impedance for each antenna type indicated. Antenna types not included in this list, having a gain greater than the maximum gain indicated for that type, are strictly prohibited for use with this device.

Avis: Cet émetteur radio (IC: 8975A-A10040601) a été approuvé par Industrie Canada pour fonctionner avec les types d'antennes énumérés ci-dessous avec le gain maximal admissible et l'impédance d'antenne requise pour chaque type d'antenne indiqué. Les types d'antennes ne figurant pas dans cette liste, ayant un gain supérieur au gain maximal indiqué pour ce type, sont strictement interdits pour l'utilisation avec cet appareil.

INST 3864-SK Starter Kit Instructions 12/18

Antenna:

Parker P/N: QX-008-387 (Gain: 0±1.5 dBi;
Impedance – Nominal: 50 ohms)

EU Digital Transmission System
868MHz Radio Module:
Frequency Range: 868-870MHz
Output Power: 13.63 dBm ERP

Parker Hannifin Corporation
Quick Coupling Division
8145 Lewis Road
Minneapolis, MN 55427
phone 763 544 7781
fax 763 544 3418

© 2018 Parker Hannifin Corporation



ENGINEERING YOUR SUCCESS.